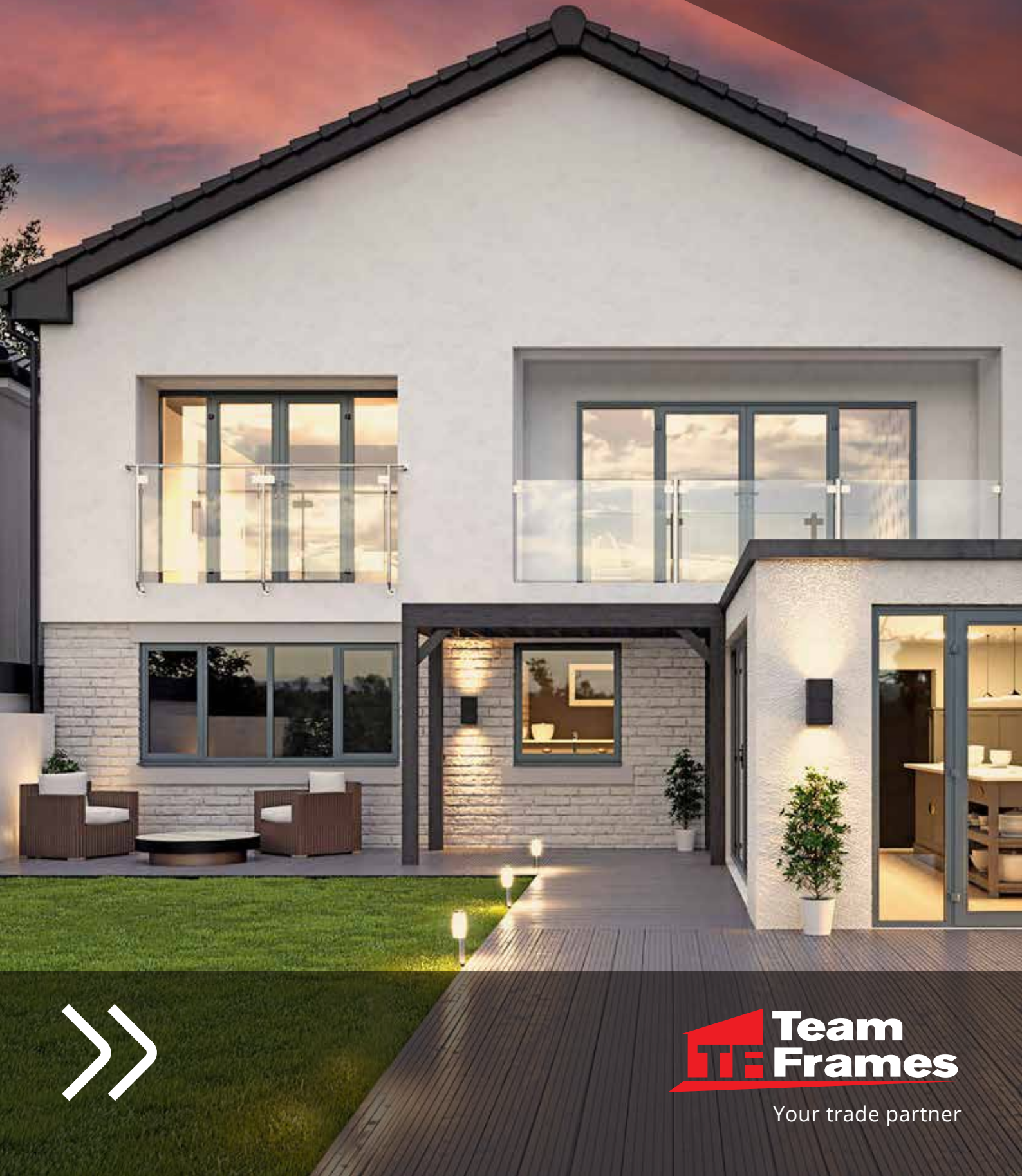


WINDOWS, DOORS & ROOFS

PVC-u, Aluminium & Composite



 **Team
Frames**

Your trade partner

ABOUT US

Team Frames are a trade supplier of PVCu and Aluminium windows and doors. All products are manufactured in our own factory in Eastbourne. This allows us to provide exceptional service throughout the South East.

Our PVCu windows are manufactured in Britain to the very highest standards using environmentally friendly lead free PVCu from the worlds leading extruders, in compliance with recognised industry standards.

All our windows are internally glazed and can conform to Document Q, for enhanced resistance to intrusion if specified. Our range of windows has been exclusively designed for the UK's home improvement market. The range includes our standard 70mm casement windows, French , Shaped, Tilt & Turn and Sliding Sash products.

All windows and doors can be are finished in standard gloss white PVCu with a selection of woodgrain and solid colour foils.

Upgraded features can provide additional security, thermal efficiency, sound insulation.

MAKE TEAM FRAMES YOUR FIRST CHOICE

BIG ENOUGH TO DELIVER - LOCAL ENOUGH TO CARE

A branch near you?

Aylesford

Brighton

Eastbourne

Hastings

Orpington

Tunbridge Wells

WINDOWS & DOORS
in just 5 days**

REFER-A-FRIEND

Simply refer a new customer to your local Team Frames branch and enjoy a £50 credit on your next invoice!

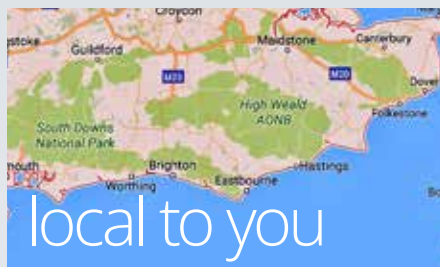
Terms & Conditions apply - See in branch



WHY CHOOSE TEAMFRAMES?

Are your current suppliers manufacturers or 'middle men'?

Team Frames manufacture their own PVCu and Aluminium products. Why buy from a middle man when you can deal directly with a factory outlet?



Locally-made?

Many suppliers buy their frames from manufacturers in Ireland, Wales and Northern England. Ask them - you may be surprised! Team Frames manufacture our own PVCu and Aluminium products in Eastbourne.

Convenient for YOU?

We are open from 7.30am Monday to Friday. We have a wide range of sample windows available for loan and we stock the consumables needed to finish the job. We accept credit card payments to allow you to manage your finances more easily. We also have a rapidly expanding network of branches throughout the South East for when you are working further from home.

Do they install?

Is your supplier also your competitor? We don't believe that this relationship can work which is why we are a trade-only supplier and we do not install. When we get enquiries from the public we pass them on to our customers. Lets both stick to what we are good at!



Do they offer timed-delivery and storage?

Sometimes jobs can get delayed and you have nowhere to store your frames. Not all suppliers have the space either so frames and glass can get damaged. We understand this and have invested in suitable premises so that we can store frames for you until required. When you are ready you can collect from us or take advantage of our free local delivery service. All our delivery vehicles are fitted with trackers allowing us to keep you updated.



Does their credit rating matter?

Businesses do fail in difficult times. If your supplier is no longer there to support guarantee claims then you could be left to put things right. Some suppliers offer tempting low prices but the final cost to you could be huge!

Compare products?

Team Frames only manufacture the Liniar system which is probably the most innovative energy efficient lead free product on the market today. Make awkward glazing beads, trimming gaskets and broken units a thing of the past with Team Frames. We are even happy to take old PVCu windows to be recycled free of charge - saving on the cost of skips.

SCULPTURED SASH

sculptured profile, internally-glazed casement window

PVC-u



KEY FEATURES

- 01. Fusion-welded frame and sash
- 02. Ultra-low profile glazing gasket - almost invisible
- 03. Adjustable friction stays for top-hung windows.
- 04. High security, multi-point locking system
- 05. Push-button, key lockable handles
- 06. A choice of warm edge spacer bar
- 07. High-impact modified PVCu
- 08. Internally glazed for enhanced security
- 09. Double-glazed unit uses clear, energy glass

CHOICE OF FINISHES



U-Value

1.4

Sightline

104
mm

OPTIONAL

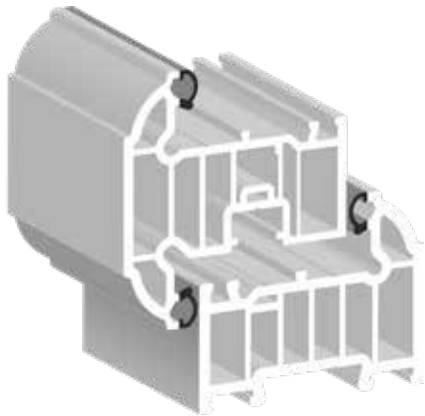


CHAMFERED BEAD

OPTIONAL



SCULPTURED BEAD



The sculptured SASH and chamfered SASH windows are our standard, high-performance casements that offer high standards of energy saving and security.

The decorative profile of the **sculptured SASH** casement provides a softer, more elegant appearance than its **chamfered SASH** version. It's available in a wider range of substrate colours and can

use chamfered glazing beads by way of contrast if requested. **sculptured SASH** is more popular on traditional, period homes but is equally at home on new-build properties that have been designed in a more traditional

style. A choice of smooth or woodgrain foil finishes are available to add colour or emulate traditional timber windows.



sculptured

KEY FEATURES

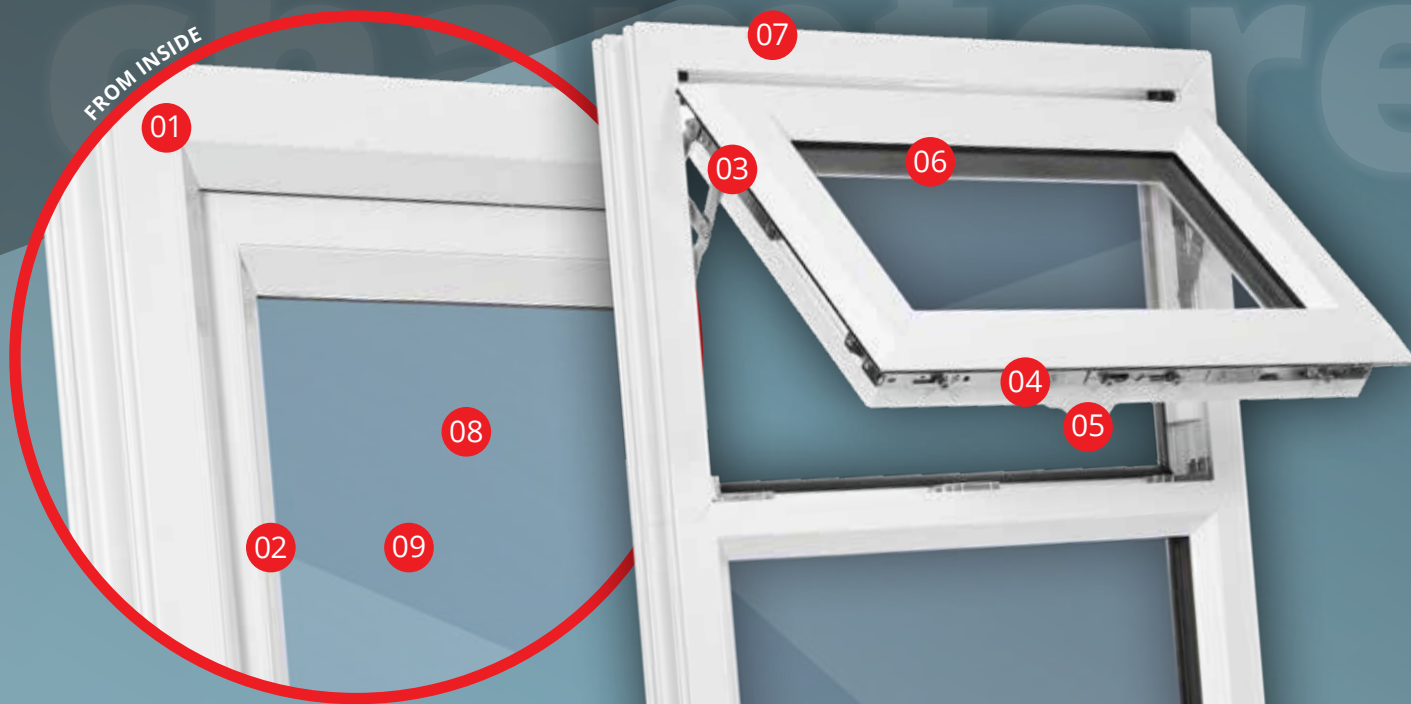
- » Internally glazed
- » 70mm frame depth
- » 6-chamber outer frame
- » 6-chamber sashes
- » Mix-and-match beads
- » 28mm double glazed
- » 36mm triple-glazed option

sculptured

CHAMFERED SASH

chamfered profile, internally-glazed casement window

PVC-u



KEY FEATURES

- 01. Fusion-welded frame and sash
- 02. Ultra-low profile glazing gasket
- 03. Adjustable friction stays for top-hung windows. Easy-clean/ fire escape friction stays for side-hung
- 04. High security, multi-point locking system
- 05. Push-button, key lockable handles A choice of either black, white or grey, warm edge spacer bar
- 06. High-impact modified PVCu
- 07. Internally glazed for enhanced security
- 08. Double-glazed unit uses clear, energy glass to achieve maximum amounts of incoming light and high U-values

CHOICE OF FINISHES



U-Value

1.4

Sightline

104
mm

OPTIONAL

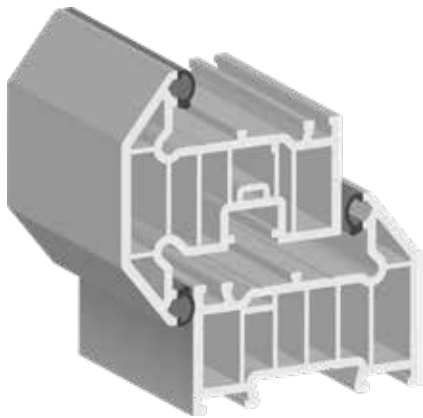


CHAMFERED BEAD

OPTIONAL



SCULPTURED BEAD



PVC-u

The chamfered (bevelled) profile of the **chamfered SASH** casement provides a sharper, more modern appearance than its **sculptured SASH** version. It's available in several substrate colours and can use sculptured glazing beads by way of contrast if requested. **chamfered SASH** is more popular on modern

homes but the bevelled appearance does emulate the appearance of many traditional styles of timber windows. A choice of smooth or woodgrain foil finishes are available to add colour, emulate traditional timber windows or create an ultra-modern style..

KEY FEATURES

- » Internally glazed
- » 70mm frame depth
- » 6-chamber outer frame
- » 6-chamber sashes
- » Mix-and-match beads
- » 28mm double glazed
- » 36mm triple-glazed option



SLIM SASH

slim sightline, chamfered casement window

PVC-u



KEY FEATURES

- » 99mm sightlines
- » 6-chamber frame and sash
- » chamfered sash and frame
- » 28mm double glazed
- » internally glazed
- » chamfered or sculptured glazing beads
- » U-Values above 1.4

CHOICE OF FINISHES



U-Value

1.4

Sightline

99
mm

OPTIONAL



CHAMFERED BEAD

OPTIONAL



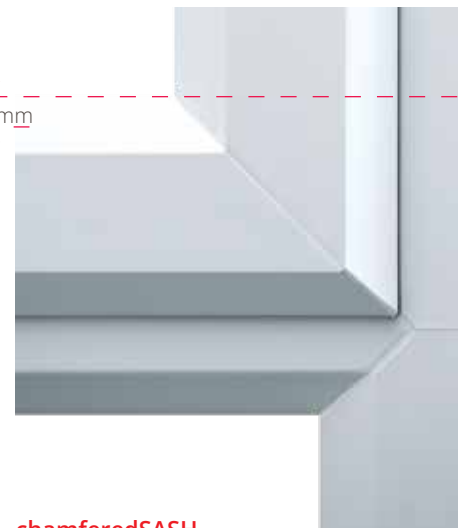
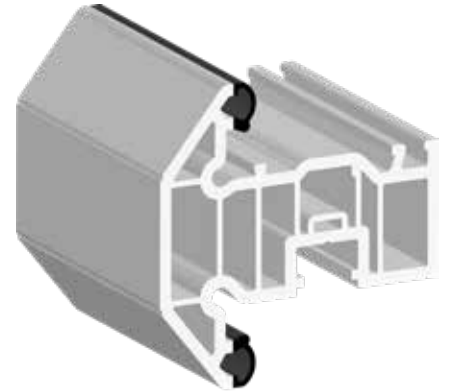
SCULPTURED BEAD

The opening vents of these PVCu windows use a special slim sash profile exclusive to Team Frames - they are the slimmest internally-glazed PVCu windows in the UK at just 99mm!

slimSASH has a larger glass area, allowing more daylight into your home whilst still achieving outstanding energy efficiencies, due to its 6 chambered construction detailing. These slim profile PVCu windows have a chamfered 'putty-line' external profile, with a choice of matching chamfered or alternative sculptured internal glazing beads if required.

Manufactured from high-impact modified PVCu to prevent warping or cracking and with fully welded frames, **slimSASH** windows are the very ultimate enhancement to any home.

Optional shoot-bolt locking systems and anti-intrusion hinge bolts can also be specified to further aid your security levels, ensuring both sides of your new windows are equally protected from potential forced attack.



slimSASH

chamferedSASH

FLUSHSASH

timber alternative casement window

PVC-u



KEY FEATURES

- » 70mm frame depth
- » **104mm** sightlines
- » 6-chamber outer frame
- » standard welded frame and sash
- » **optional** mechanical frame and sash
- » **optional** deep bottom rail
- » 28mm double glazed
- » standard heavy duty hinges

CHOICE OF FINISHES



U-Value

1.4

Sightline

104
mm

flushSASH timber effect PVCu windows offer a traditional timber appearance to replicate original timber windows, but without the cost and maintenance normally associated with the timber originals.

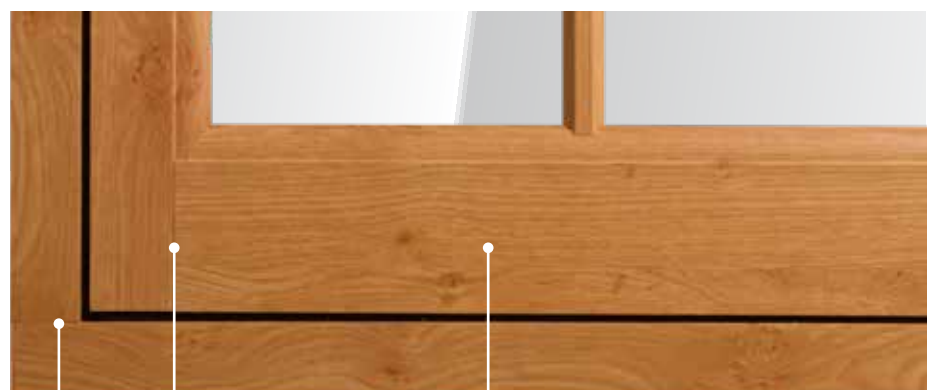


Our **flushSASH** windows are low-maintenance, as secure as all our other windows and they're weather resistant.

These traditional style products are crafted using environmentally friendly lead-free PVCu profiles and can be specified with thermally efficient double units for optimum

energy performance.

Dual-colour is a popular choice with this particular product and reflects traditional frames where the outside is painted a different colour to the interior, allowing for greater flexibility with interior decorating.



» **Optional** mechanical joint (butt joint)

» **Optional** deep bottom rail recreates the wider timber used across the bottom of the sash on older windows

FRENCH WINDOW

inward/ outward opening double casement

PVC-u



VIEWED FROM OUTSIDE

KEY FEATURES

- » 70mm frame depth
- » **104mm** sightlines
- » 6-chamber outer frame
- » 6-chamber sash
- » 28mm double glazed
- » 36mm triple-glazed
- » standard heavy duty hinges
- » standard welded frame and sash
- » **optional** mechanical frame and sash





French windows, when open, offer an abundance of fresh air, panoramic views and unhindered egress if necessary.

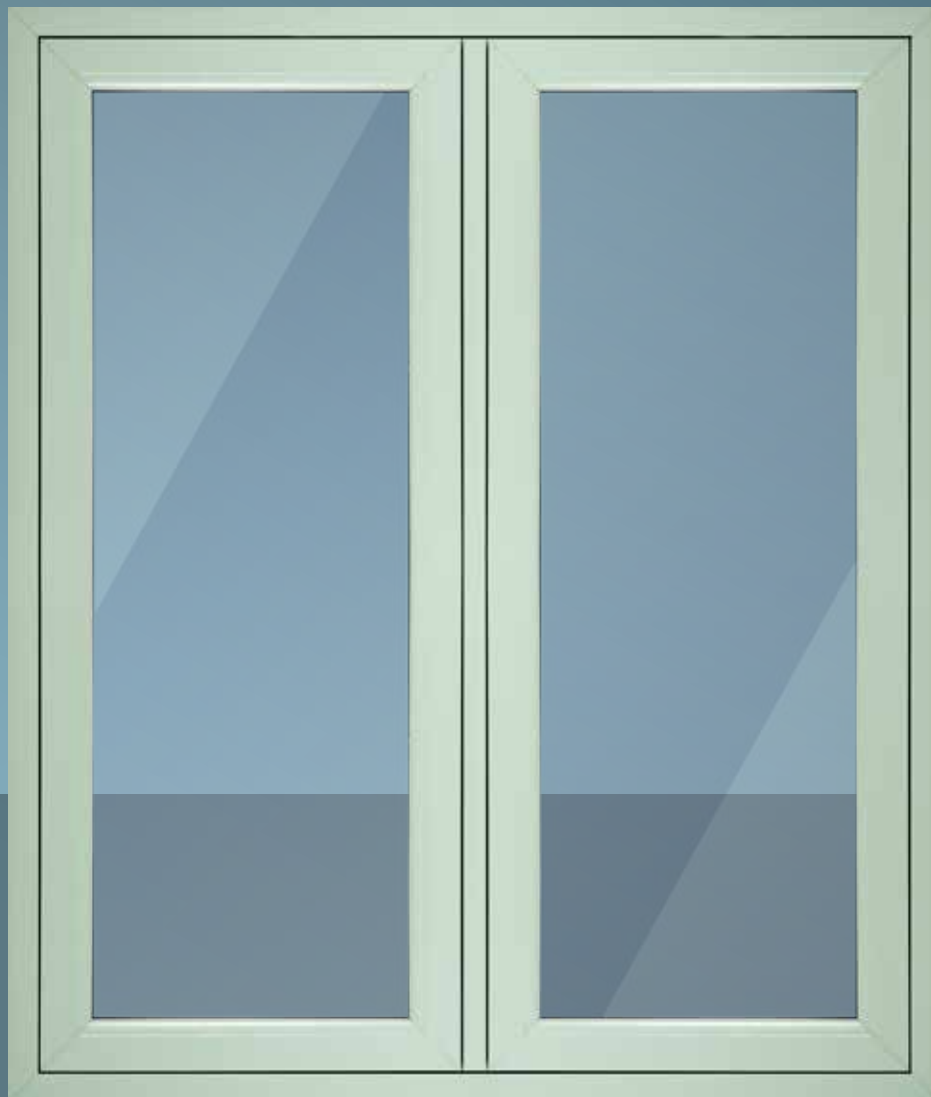
French Windows are an extension of both the TeamFrames **chamferedSASH** and **sculpturedSASH** casement window range. With a floating mullion they are perfect fire escape windows and offer compliant egress in most situations.

With a continually warming climate they provide the maximum opening size for ventilation and offer a truly unobstructed view.

FLUSH FRENCH WINDOW

flush-fitting , inward or outward opening double casement

PVC-u



KEY FEATURES

- » 70mm frame depth
- » **104mm** sightlines
- » 6-chamber outer frame
- » 6-chamber sash
- » 28mm double glazed
- » 36mm triple-glazed
- » standard heavy duty hinges
- » standard welded frame and sash
- » **optional** mechanical frame and sash

CHOICE OF FINISHES



U-Value

1.4

Sightline

104
mm

Meeting Stile

157
mm

OPTIONAL



CHAMFERED BEAD

OPTIONAL



SCULPTURED BEAD

Flush French window shown with optional mechanical butt joints to the frame and sashes



PVC-u



Flush French Windows are an extension of the **TeamFrames FlushSASH** casement window. With a floating mullion they are perfect

fire escape windows and offer Building Regulation compliant egress in most situations.



TILT & TURN

inward opening-tilting casement window

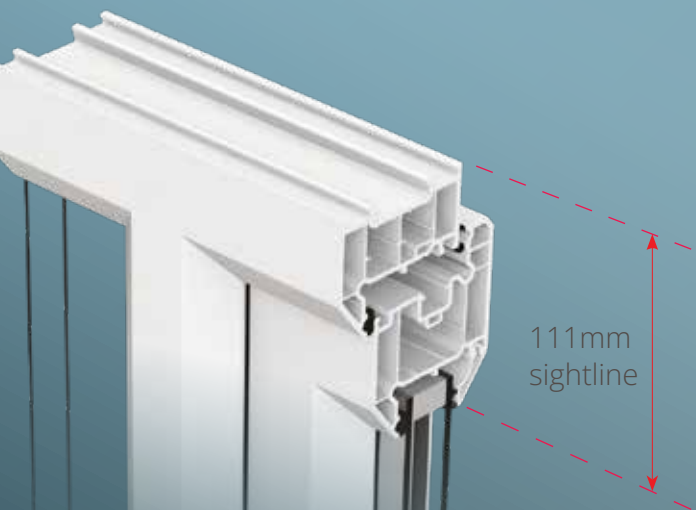
PVC-u



VIEWED FROM OUTSIDE



VIEWED FROM OUTSIDE



111mm sightline



CHOICE OF FINISHES



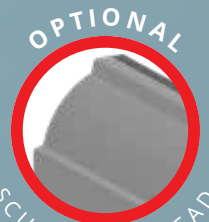
U-Value
1.4



Sightline
111
mm



OPTIONAL
CHAMFERED BEAD



OPTIONAL
SCULPTURED BEAD

Offering easy ventilation and cleaning, our dual functioning tilt and turn window is a great addition to any home.



VIEWED
FROM INSIDE



Open it like a door (inwards) or tilt the top of the sash into your room to provide secure ventilation without allowing access into the home, it offers an excellent solution especially if you have young children. They are versatile, secure and easy to operate. With a simple twist of the handle, the window can be tilted inwards from the top for ventilation. Re-closing the vent and then doing another half turn of the handle allows you to open the window the whole way from the side to let the outside in.

The design provides you with a slim, low maintenance, practical window which combines modern styling with easy operation and is perfect for larger window installations or modern extensions.

All our Tilt & Turn windows have the glass fitted from the inside for added security meaning intruders cannot remove it from the outside. Low level black cushioning gaskets increase the visible sight-lines of the product and with an array of glass, colours and furniture options, this product is about as versatile as it gets.

» KEY FEATURES

- » 70mm frame depth
- » 111mm sight lines
- » 5-chamber outer frame
- » 3-chamber sash
- » chamfered or sculptured beads
- » 28mm double glazed
- » 36mm triple-glazed
- » face-fit or concealed gearing options



SLIDING SASH

the best all-round solution for vertical sliding sash windows

PVC-U



ECOSlide PVC-U Sash window will enhance your home. Vertical sliders are a traditional style of window. Commonly found in older properties, they are usually manufactured from timber. This elegant type of window is a popular replacement in period houses, its design giving your home a sophisticated charm and style that you won't achieve from a standard casement window. Real timber windows can be expensive so homeowners look to more affordable solutions such as PVC-U.

Choose from a range of colour and hardware options to complete your window and create a look that fits in perfectly with your home.

It's the little details that help make ECOSlide sash windows as authentic as possible. ECOSlide windows are designed to be smooth and sleek with slim profile sections giving a better appearance, which is pleasing to the eye as well as offering improved views from the inside and outside.

To complete the timber-like appearance, ECOSlide windows incorporate the same stylish features found on original timber sash windows such as run through sash horns if required, astragal bars or Georgian bars and traditional-style operating hardware. The jambs, sash sections and meeting rail are all engineered to look just like a timber sash window, giving you truly authentic looking new windows.

CHOICE OF FINISHES



U-Value

1.4

Sightline

102 mm

Interlock

63 mm

OPTIONAL

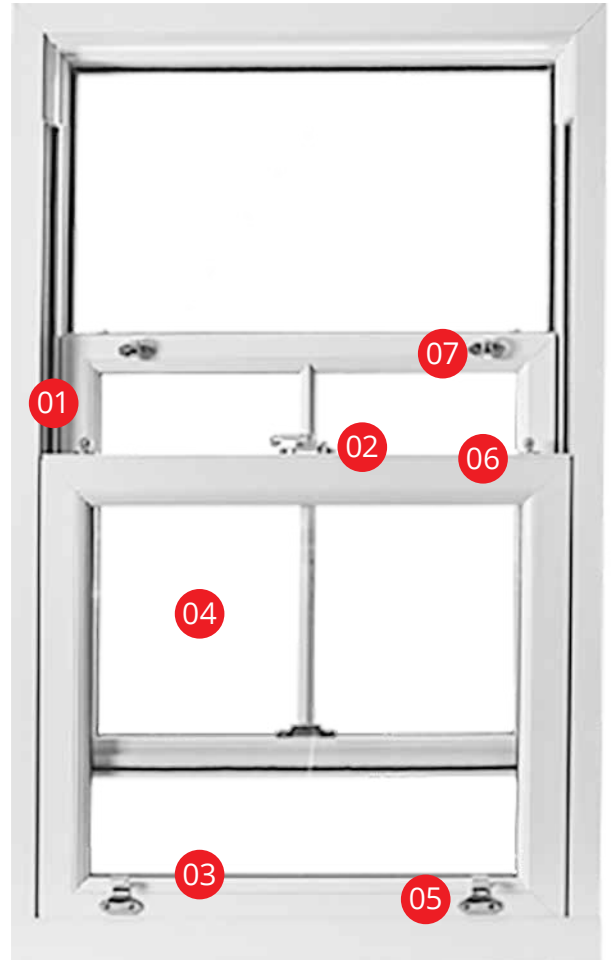


SCULPTURED BEAD

Older property or a more modern home, ECOSlide PVC-U sash windows are a cost-effective solution for replacement window or as an alternative to other styles.

- » Travel restrictors
- » Sash locks
- » Security bar
- » Toughened glass fitted as standard
- » Sash lifts
- » Tilt knobs
- » Pole eyes
- » D-handles (not shown)

The window sashes feature an inward opening tilt facility to allow easy and safe cleaning of the outside frame and glass from inside your home. This is particularly useful for second storey windows or windows positioned in a hard to reach place, such as above a conservatory.



PREMIUM SLIDING SASH

the most authentic replica sash window

PVC-u

KEY FEATURES

- » **NEW** astragal bar design
- » 35mm meeting rail
- » Internal staff bead
- » **NEW** sash horn design
- » Chamber filler
- » Authentic deep bottom rail
- » Authentic deep cill
- » Internal interlock
- » **Optional** sash horn



Every detail of the Ultimate Rose replacement PVCu sash window has been designed to replicate the charm and character of a timber sash window.

With slim timber-like profiles and an industry-leading 35mm meeting rail, no other sash window can compete

with it on style and authenticity. And with period features as painstakingly detailed as joinery-style mechanical joints, a deep bottom rail, run-through horns and external putty lines, it would take an expert to spot that it's PVCu.

Add to that the host of benefits that come with modern materials and techniques – from energy efficiency and security, through to sound insulation and low maintenance – and you'll see why Ultimate Rose represents the pinnacle of PVCu sash window design.

It's also why it won New Product of the Year in the prestigious G13 Glass and Glazing Industry Awards.



RESIDENTIAL DOOR

chamfered or sculptured residential door

PVC-u

KEY FEATURES

- » Chamfered or Sculptured
- » 100% lead-free PVC-u
- » NO lead stabilisers.
- » Polished finish reduces maintenance
- » Fully-glazed option
- » Optional midrail or transom
- » Weather bar
- » Low PVC-u threshold option
- » Stub cill option





Security is of paramount importance and this is why we offer some of the most secure locking systems. That's why we partner with companies such as Ingenious® for our door security.

Our Residential Doors are available in a variety of obscure glass options, enhancing the privacy of a property.

Held into place under compression and gasketed using patented double action bubble seal, double rebated doors provide superior levels of weather tightness and zero air leakage.

Our Residential Doors are available in a range of colours to match your windows and with a multitude of glass and panel designs, you can rest assured that you will find the perfect match for any property.



STABLE DOOR

chamfered or sculptured stable door

PVC-u



KEY FEATURES

- » Chamfered or Sculptured
- » Optional mullion
- » Weather bar
- » Low threshold options
- » Stub cill option

VIEWED FROM INSIDE



CHOICE OF FINISHES



U-Value
1.4



Sightline
136 mm



OPTIONAL
CHAMFERED BEAD



OPTIONAL
SCULPTURED BEAD



PVC-u



More versatile than a standard PVCu door, our stable doors provide maximum ventilation without the need to open the whole door leaf, keeping children and pets safely indoors. Made from two individual door leaves securely coupled

together, the door can operate as a normal residential door, with the two openings functioning in tandem. A simple turn of a handle disengages the coupling, allowing the top leaf to operate independently of the bottom.

For extra security and as standard all our external PVCu stable doors come with a multipoint hook locking system and reinforced frames and panels to ensure maximum security for you and your family.

FRENCH DOOR

high-performance double door

PVC-u



CHOICE OF FINISHES



U-Value

1.4

Sightline

136
mm

Meeting Stile

225
mm

OPTIONAL



CHAMFERED BEAD

OPTIONAL



SCULPTURED BEAD

**TeamFrames PVCu
French Doors**
transform the look of
any home and have
been manufactured
to meet the highest
security standards.



PVC-u



A choice of hinges including a projecting flag hinge or a slim SFS Dynamic hinge are available and denote whether a door can be folded back flat against the adjacent window leaf. The doors suite perfectly with the TeamFrames PVCu casement windows and offer the same option of a chamfered or sculptured glazing bead.

TeamFrames PVCu French Doors are tested against the most extreme weather conditions including wind and water tightness, hard and soft body and cycle test.



FLUSH FRENCH DOOR

high-performance, timber-style double door

Flush French

PVC-u



CHOICE OF FINISHES



U-Value
1.4



Sightline
132
mm



Meeting Stile
195
mm



OPTIONAL
CHAMFERED BEAD



OPTIONAL
SCULPTURED BEAD



Your home will be lighter and brighter.
Enjoy the feeling of more space.

TeamFrames flushSASH French Doors are some of the most attractive, simple to use, energy efficient and secure on the market. Designed to enhance your home they will maximise the space available.

Slim frames give you more glass, less PVCu and more natural light. The hardware is concealed so only the hinge knuckles show.

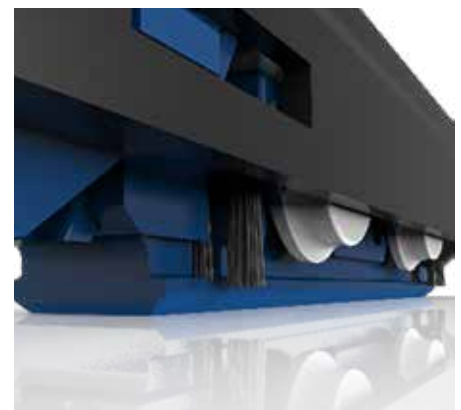
Low threshold options are ideal for wheelchair users and family homes as they create fewer trip hazards for the elderly and the very young.

PATIO DOOR

sculptured inline patio door

PVC-u





Other patio door systems operate on a four-wheel mechanism made of steel. The roller on TeamFrames PVCu Sliding Patio Doors features an eight-wheel acetal system, designed to provide a unique 'air glide' smooth, silent rolling motion.

The roller is forgiving for installers, as it's designed to self-adjust and work with the product – even over misaligned surfaces. It also has a staggering load capacity for glazed panes up to 120kg per sash.



Thermally broken, the low-threshold offers increased energy efficiency for your patio doors, and there's also a Part-M compliant low threshold with an integral ramp for seamless access.

PATIOMASTER

chamfered sliding patio door

PVC-u



KEY FEATURES

- » 70mm outer frame compatible with all leading systems
- » High-performance multipoint locking system with a deadbolt and one-piece keep
- » Dual purpose anti-lift/sash stabilising trim for security
- » Patented interlock shootbolt system
- » Easy glide, stainless steel track/ roller system for maximum service life
- » Low sightline co-extruded gaskets

CHOICE OF FINISHES



U-Value

1.4

Sightline

122
mm

Interlock

84
mm

OPTIONAL



CHAMFERED BEAD

OPTIONAL



SCULPTURED BEAD



Each style of door is precision manufactured to your order using top-quality components and our highly skilled team. PatioMaster only makes patio doors. By focusing on a specific sector of the glazing industry we have become acknowledged experts, able to offer both premium products and great technical support.

Thermally broken, the low-threshold offers increased energy efficiency for your patio doors, and there's also a Part-M compliant low threshold with an integral ramp for seamless access.



PVC-u



- » **OPTIONS**
- » **2, 3 or 4-pane configurations**
- » **Bespoke midrail to fit security-cowled letterplates**
- » **Bevelled or sculptured sashes**
- » **Thermally broken, aluminium low threshold**
- » **Secured by Design accredited version available**



DISTINCTION

grp composite doors

Composite



DISTINCTION DOORS

Composite

The woodgrain finish on our composite door is developed from oak tree wood grain, creating a beautifully authentic appearance and superior performance that is only available on our GRP door.

Our range of colours, styles and glass options will make your door truly unique and by ensuring that we perfectly match the colour, wood grain and moulding on the glazing cassettes, you can guarantee a flawless finish.

Our glass designs complement our door styles and colours and are triple glazed and laminated as standard for extra security and energy efficiency.



Our GRP composite door offers enhanced security thanks to its rigid polymer sub-frame, high density insulated core and high impact resistant GRP skin. The door leaf and glazing system are major components when part of a door set and have a proven ability to achieve PAS24:2016, industry's enhanced security standard, a prerequisite in attaining certification to Secured by Design a police initiative to protect against unlawful intrusion.



FORTREZZ

premium hardwood timber core doors

Composite

Choose from the Classic, Metro or Country collection to bring a personal touch to your home. Our composite doors are able to offer everything from country charm to the cutting-edge flair of the modern day.





Many composite doors on the market utilise a traditional 'stile and rail' internal subframe, which offers inferior performance when compared to our solid LVL core. Stile and rail sub-frames are usually filled with either a PU foam core, or a mix-species timber core. This notably reduces the inherent strength of the door, and can even result in some doors bowing due to the lack of structural integrity.



Fortrezz doors are renowned for their strength and security, our 48mm thick cross-banded veneered laminated solid timber core delivers strength and dimensional stability and is a natural choice for high security, providing our homeowners peace of mind.



SOLIDOR

softwood core composite doors

Composite

Solidor[®]





Peace of mind built in.

Help keep you and your family safer with the UK's most secure composite front door.

Open up a world of stylish impressive possibilities.

Design your own front door from a wide variety of colours and styles to create an incredible first impression for everyone that visits.

A front door with a warm welcome.

Make your home feel cosier with a new front door and keep more of the warmth where it belongs - inside.

Always look on the bright side.

With over 10,000 front door design combinations, you can choose one that floods your home's entrance with as much light as you like.



Solidor make fine composite doors, packed with exclusive features that aren't available on many other composite doors.

Unique colours, the latest high security hardware and beautiful features are just some of the reasons why high quality installation companies offer our products, while homeowners demand them.

Wherever you are in the UK, there's a Solidor installer that can help transform your front door into a stylish and stunning entrance to your home. Solidor, ask for it by name.

DOORSTOP

grp composite door range

Composite



KEY FEATURES

- » GRP outer skins
- » Wind tested at up to 80mph
- » PAS24 and BS6375 approved
- » **OPTIONAL** Secured by Design upgrade
- » 13 standard door colours
- » **OPTIONAL** MDS25 threshold for additional weather and thermal performance





The edges

The hinge edge of your door has a PVC edging. Then we cut through the edging so that whichever hinge you selected sits neatly inside the edge of your door.

To make the door super-strong, the lock edge has been fitted with a full length of 4mm thick, powder-coated aluminium lock strip. Then your preferred lock sits flush inside your door.

Reglazable

Making a door to just hold the glass is easy. But have you ever thought about what happens if the glass unit breaks down in that composite door you fitted? You will want that door to have been a Door-Stop door. Our unique and patented glazing cassette can be removed from the inside to let you simply change the glass and reuse the cassette. You won't need a new door because it has been damaged whilst trying to follow impossible deglazing knacks and techniques!

LIVINROOF

hybrid solid/ glazed roofing system

PVC-u

hybrid solid/glazed roof system

- » Wind tested beyond storm force
- » Optional decorative cornice to hide guttering system
- » Choice of glazed or solid insulated panels
- » Solid panels as low as 0.16 U-Value



Light and comfort - perfectly balanced **livinROOF®** combines the best elements of a solid or glass conservatory roof. Extend your living space and create a comfortable room that's light, bright and suitable for year-round living. Whether you are planning a new house extension, replacing an existing conservatory roof or creating a Garden Room, **livinROOF®** will give you the design flexibility you need. Enjoy the sense of privacy and comfort that comes with a solid roof but without compromising on light.

PVC-u

Let in the amount of light you want

The glass panels can be inserted to replace any of the grey roofing panels, and in any shape – enabling you to maximise the light in your room to produce a contemporary design not easily achievable with other conservatory roofs. Inside, the **livinROOF®** is stunning. It can deliver a magnificent vaulted ceiling and incorporates an internal pelmet around its perimeter, into which lights can be installed. At the ridge of the **livinROOF®**, you can insert or hang lights in places you otherwise wouldn't be able to on a vaulted or suspended ceiling.

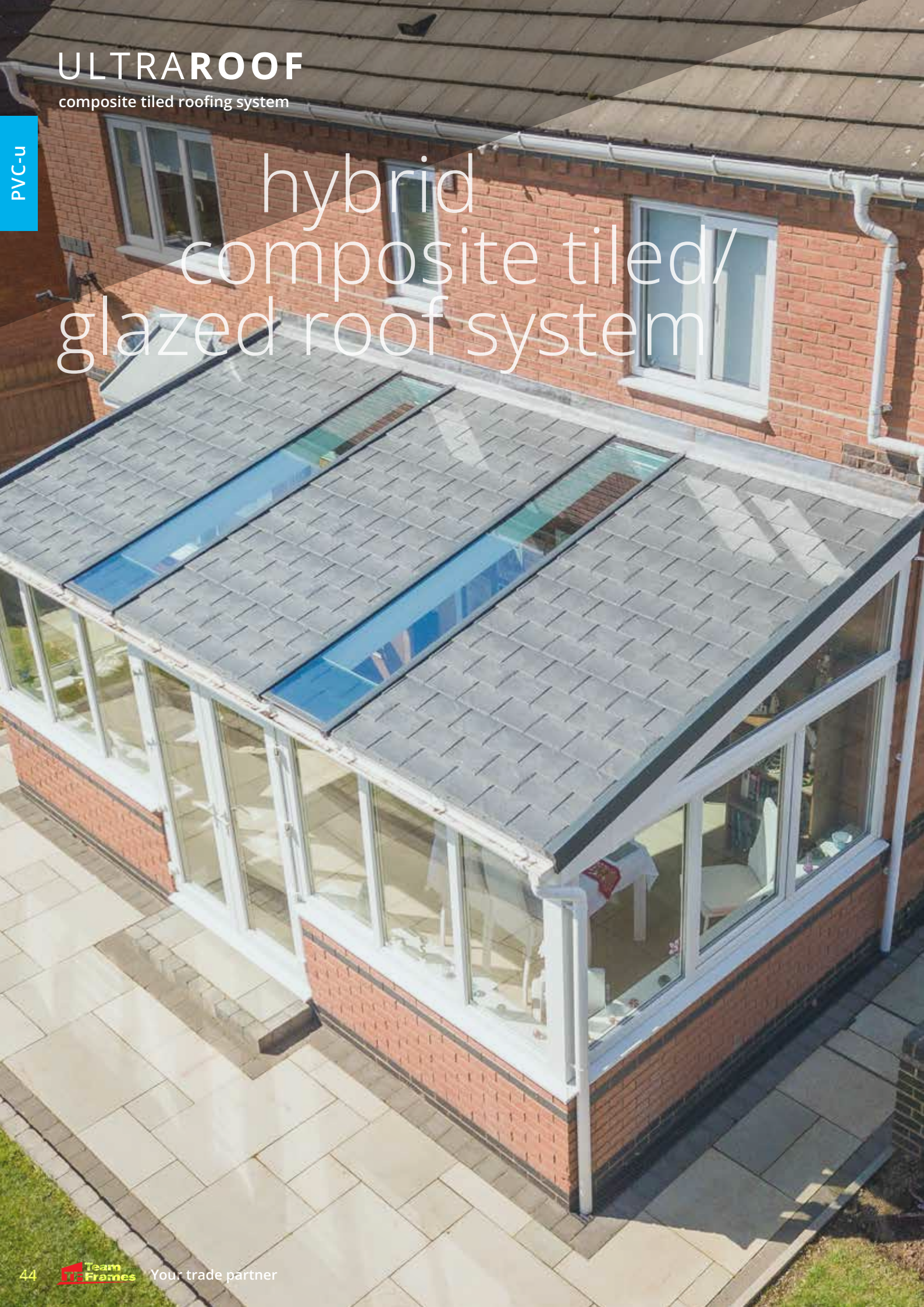


ULTRAROOF

composite tiled roofing system

PVC-u

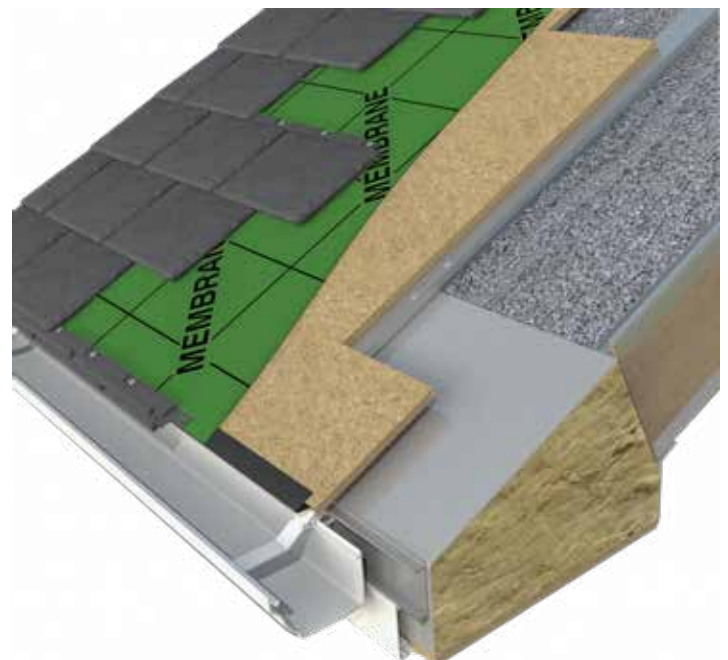
hybrid
composite tiled/
glazed roof system





The **ultraROOF® conservatory roof** captures an authentic tiled aesthetic, while offering modern standards of performance and design. As the lightest and strongest tiled conservatory roof on the current market, it is designed to sit on old or new window frames and doors and will never need a tie bar to maintain structural integrity.

Superior strength for larger designs, accommodating 4m spans for bi-folds without the need for any extra structural support to maintain performance.



FLATROOF

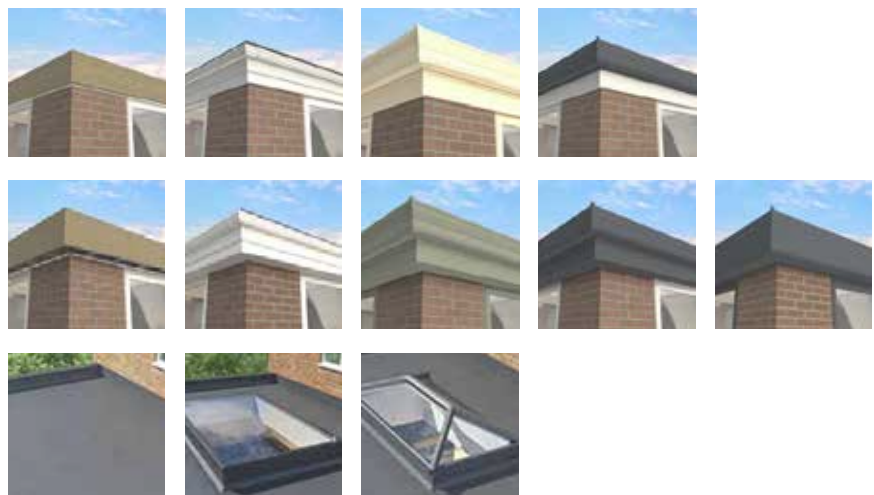
thermally efficient flat roof with lantern or skylight options

PVC-U

complete
flat roof systems



If you're a fan of clean modern lines then a **flatROOF®** extension with flat skylights or lanterns is the perfect choice for you. This high quality flat roof system is the most thermally efficient on the market with a U-Value of 0.14W/m² K, and the frameless flat skylights or slim lanterns flood your room with natural light for an extension that is as cosy as it is beautiful.



ULTRASKY

orangery, roof, lantern and skylight system

PVC-u

complete
glazed extension
system



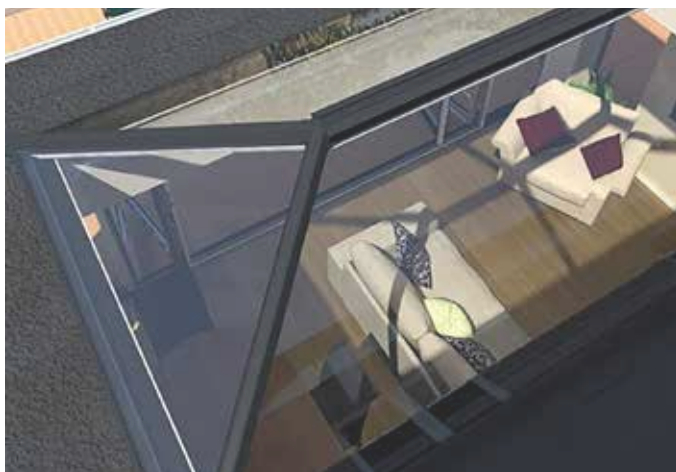
ultraSKY's revolutionary roofing systems put warmth and light at the heart of your new extension or orangery design. Guaranteed for 10 years, the market's strongest glazed roofs are designed to flood your new room with light. Choose from four simple, stylish aluminium roofing systems to create the ultimate orangery or extension.



Designed for spectacular builds up to 8m x 5.6m, the **ultraSKY® orangery** is the ultimate in architectural aluminium design with elegant uninterrupted sightlines. **ultraSKY® orangery** uses an integrated goalpost to support large spans of bi-folding or sliding doors up to 6m. Add aluminium super-insulated columns and a flat cornice for an elegant and stylish finish.



The aluminium **ultraSKY® roof** maximises light by extending to the eaves beam rather than using a flat roof. This slimline roof with no bulky radius ends and less bars lets in more light than a traditional orangery or flat roof extension. A choice of aluminium external cornices add shape and style to the roofline, hide unsightly gutters and the variable width pelmet adds insulation to ensure your orangery or extension is always warm and cosy.



The aluminium **ultraSKY® lantern** can be inserted into a flat roof or a traditional orangery deck and is ideal for large builds where the roof height is restricted. **ultraSKY® lantern** has a 25° pitch which draws more light into the room creating a stunning focal point. Using the strongest ridge on the market, Ultrasky has significantly less bars than other lanterns.



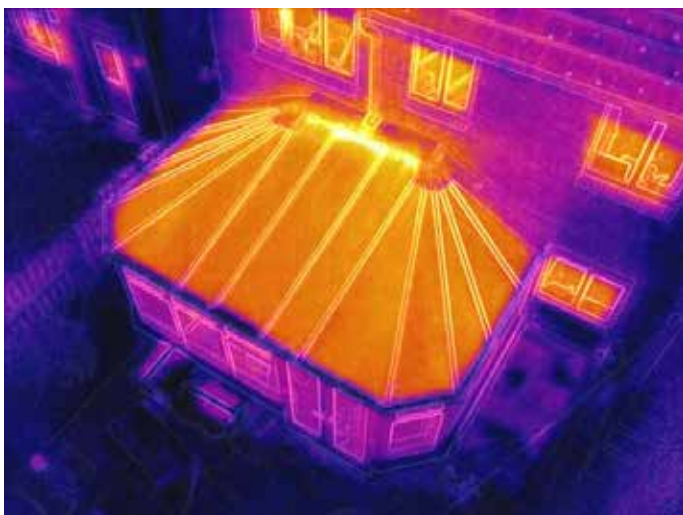
Installing an **ultraSKY® flat skylight** will flood your room with natural light. A thermally insulated core and optional insulated kerb provide unrivalled thermal performance. Frameless edge to edge glass with an aluminium surround provides the ultimate in simple contemporary design.

WARMER ROOF

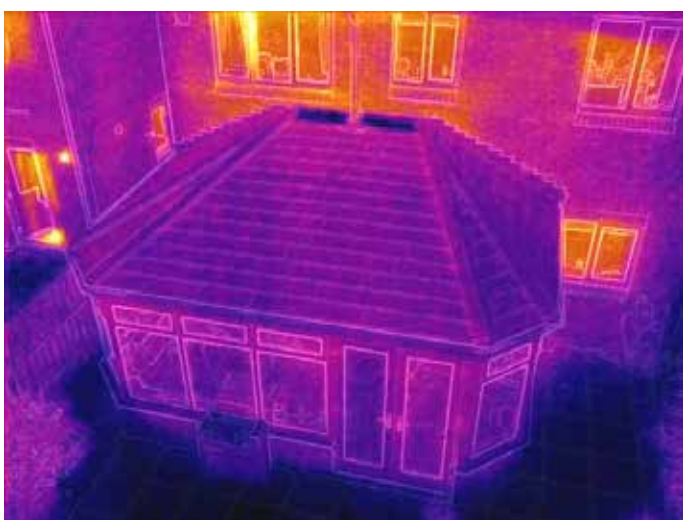
composite tiled, timber roof system

PVC-u





Ordinary glass conservatory roof loses a large amount of heat



Warmer Roof loses very little heat



Natural insulator

Timber is a natural insulator. As a result, timber frame buildings are more thermally-efficient and require less energy, making them cheaper, easier (and greener) to heat.

No risk of condensation

Timber is a far more natural insulator than aluminium as aluminium is one of the best conductors of heat and therefore prone to cold bridging.

Versatile

Timber can be easily modified on site unlike aluminium. This can speed up the installation process should site conditions dictate changes in the installation.

We are Eco-friendly

No construction material offers more environmental benefits than timber. All of our timber is sourced from responsible companies with sustainable forest regeneration programmes.

The Warmer Roof is made up from a timber framework section, either shaped or rectangular, which forms a structural link between both the eaves and ridge. The timber framework is supported by a specially produced and engineered Glulam eaves beam which provides incredible structural strength, long term durability and performance. This is attached to the head of the window frames and finished off externally with fascia board and an 'Ogee' decorative gutter system. All roof pods are factory pre-assembled using C24 roof grade timbers and have been structurally designed by our specialist engineers. All pods are covered externally with a plywood / OSB outer skin for extra rigidity and strength.

OBSCURED GLASS PATTERNS

designs and obscurity levels



FLEMISH

LEVEL 1



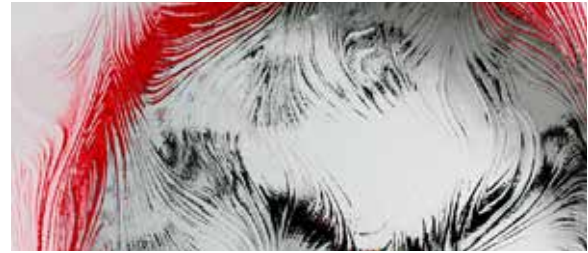
DIGITAL

LEVEL 3



WARWICK

LEVEL 1



TAFFETA

LEVEL 3



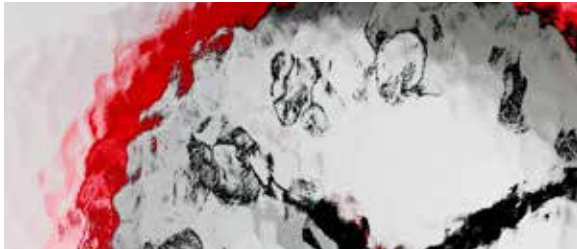
CHANTILLY

LEVEL 2



AUTUMN

LEVEL 3



MINSTER

LEVEL 2



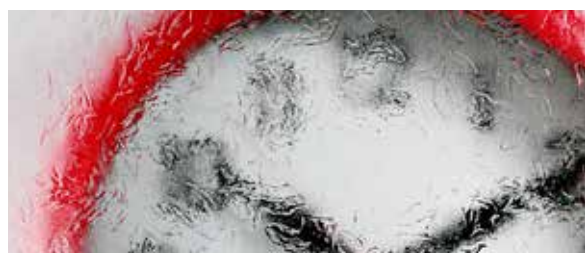
STIPPOLYTE

LEVEL 4



REEDED

LEVEL 2



OAK

LEVEL 4



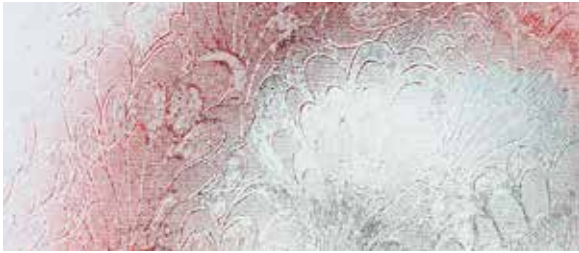
SYCAMORE

LEVEL 2

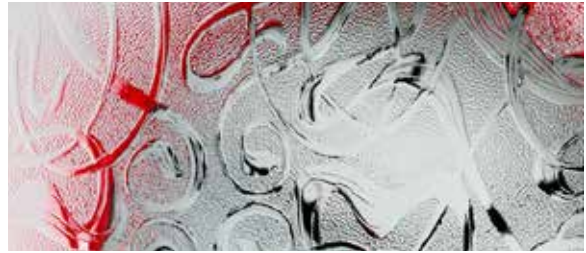


CHARCOAL STICKS

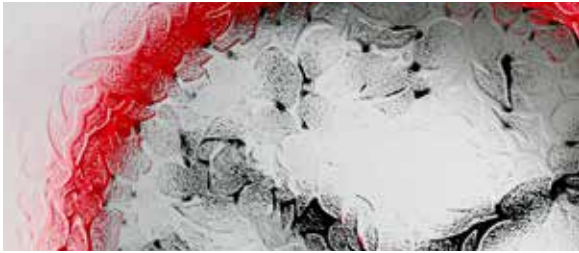
LEVEL 4



PELERINE LEVEL 4



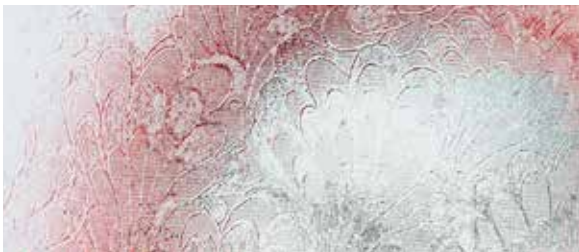
EVERGLADE LEVEL 5



FLORIELLE LEVEL 4



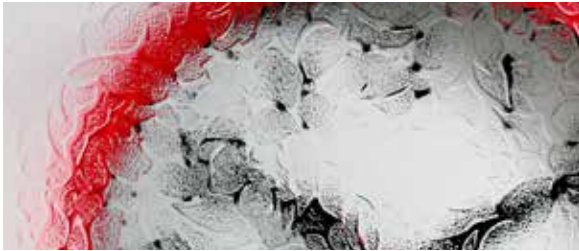
ARCTIC LEVEL 5



PELERINE LEVEL 4



COTSWOLD LEVEL 5



FLORIELLE LEVEL 4



CASSINI LEVEL 5



CONTORA LEVEL 4



TRIBAL LEVEL 5



MAYFLOWER LEVEL 4



SATIN LEVEL 5

FOILED FINISHES

Woodgrain and smooth foils



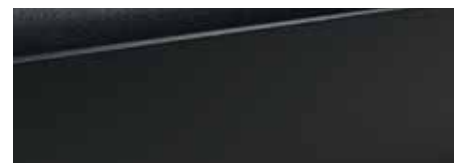
All of our PVCu windows and doors are available in a wide range of foil finishes, either with a flat smooth finish or a textured woodgrain. Please enquire on current availability



White grain RAL9010



Rosewood



Anthracite RAL7016



Schwarzbraun (black-brown)



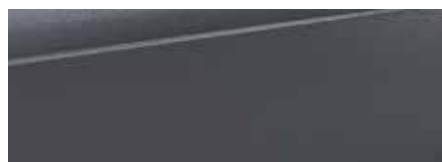
Cream



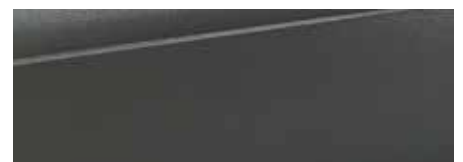
Golden Oak



Chartwell Green



RAL7015



RAL7012

RAL COLOURS

Powder-coated/ molecular-bonded finishes



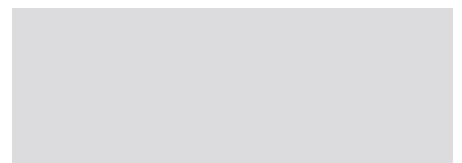
All Aluminium windows and doors are available in a wide range of polyester powder coatings. Please enquire on current availability



RAL7005



RAL7042



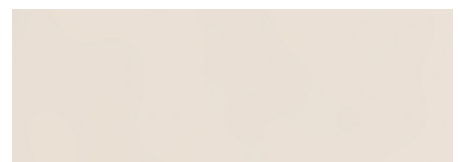
RAL7035



RAL5023



RAL1020



RAL9001



RAL6034



RAL7044

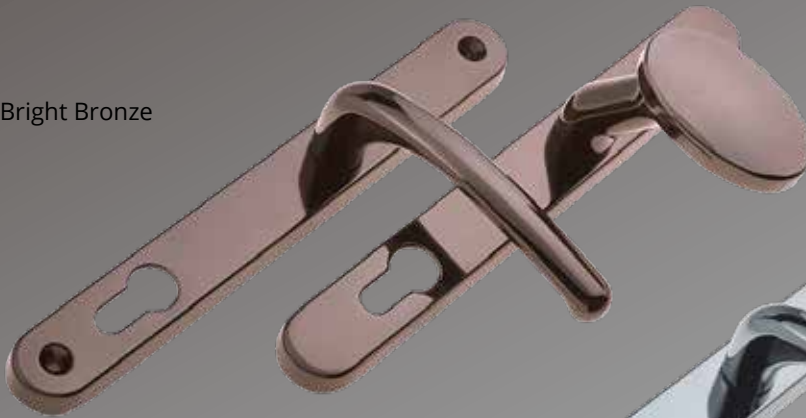


RAL1015

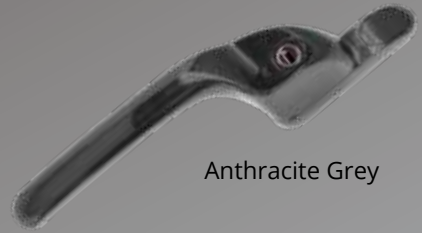
HARDWARE FINISHES

a selection of hardware finishes available

Bright Bronze



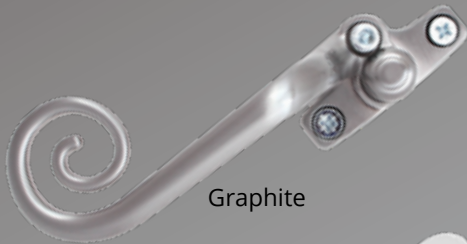
Anthracite Grey



Bright Chrome



Graphite



Antique Black



White



Gold



Bright Chrome



Graphite



Bright Chrome



Antique Black



Graphite



MADE IN
ENGLAND

Aluminium

ALUMINIUM WINDOWS & DOORS

www.teamframes.com

**Team
TF
Frames**

Your trade partner. 57

SHEERLINE DESIGN

style features of the Classic, Prestige and Bifold range

Aluminium

Classic and Prestige casement window styles



Storm-Proof, Stepped Sash



Flush-Fit, Stepped Sash



Storm-Proof, Flat Sash



Flush-Fit, Flat Sash

A choice of 9 matt or 3 metallic finishes



Silver *Metallic*



Mid-Bronze *Metallic*



Black *Metallic*



Hipca White RAL 9910



Pure White RAL 9010



Cream RAL 9001



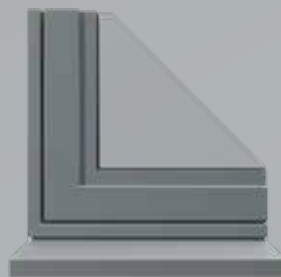
Chocolate Brown RAL 8017



Jet Black RAL 9005



Agate Grey RAL 7038



Squirrel Grey RAL 7000



Anthracite Grey RAL 7016



Pastel Turquoise RAL 6034

Designed to combine the latest technical innovations with peerless aesthetics

Prestige residential and French door styles



Storm-Proof, Stepped Sash



Flush-Fit, Stepped Sash



Storm-Proof, Flat Sash



Flush-Fit, Flat Sash

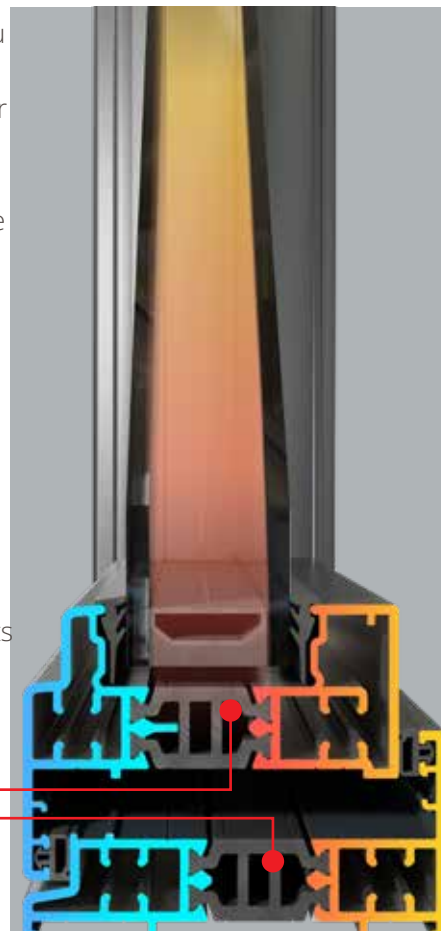
Choosing the right windows for your home is an important decision. An investment that makes a real difference to how warm and secure you feel; as well as changing the look of your property. Building on years of experience, we've incorporated many new innovative ideas; creating a warmer, slimmer and more

secure window system. Designed for discerning homeowners that aren't willing to compromise, our windows are tailored to those who demand more for their home. Built around an innovative Thermlock® multi-chamber thermal break, our windows use a patented construction method that offers unsurpassed levels of

security. Creating windows that are strong and durable, yet with slim frames that maximise the light flooding into your home. Sheerline aluminium windows are also available in a wide range of colours, letting you express your home's character.

Thermlock®
Thermlock® technology helps keep you and your home snug and warm. Cold, crisp lines on the outside hide away our innovative Thermlock® multi-chamber thermal design, helping keep you and your property well insulated against the worst of the UK weather.

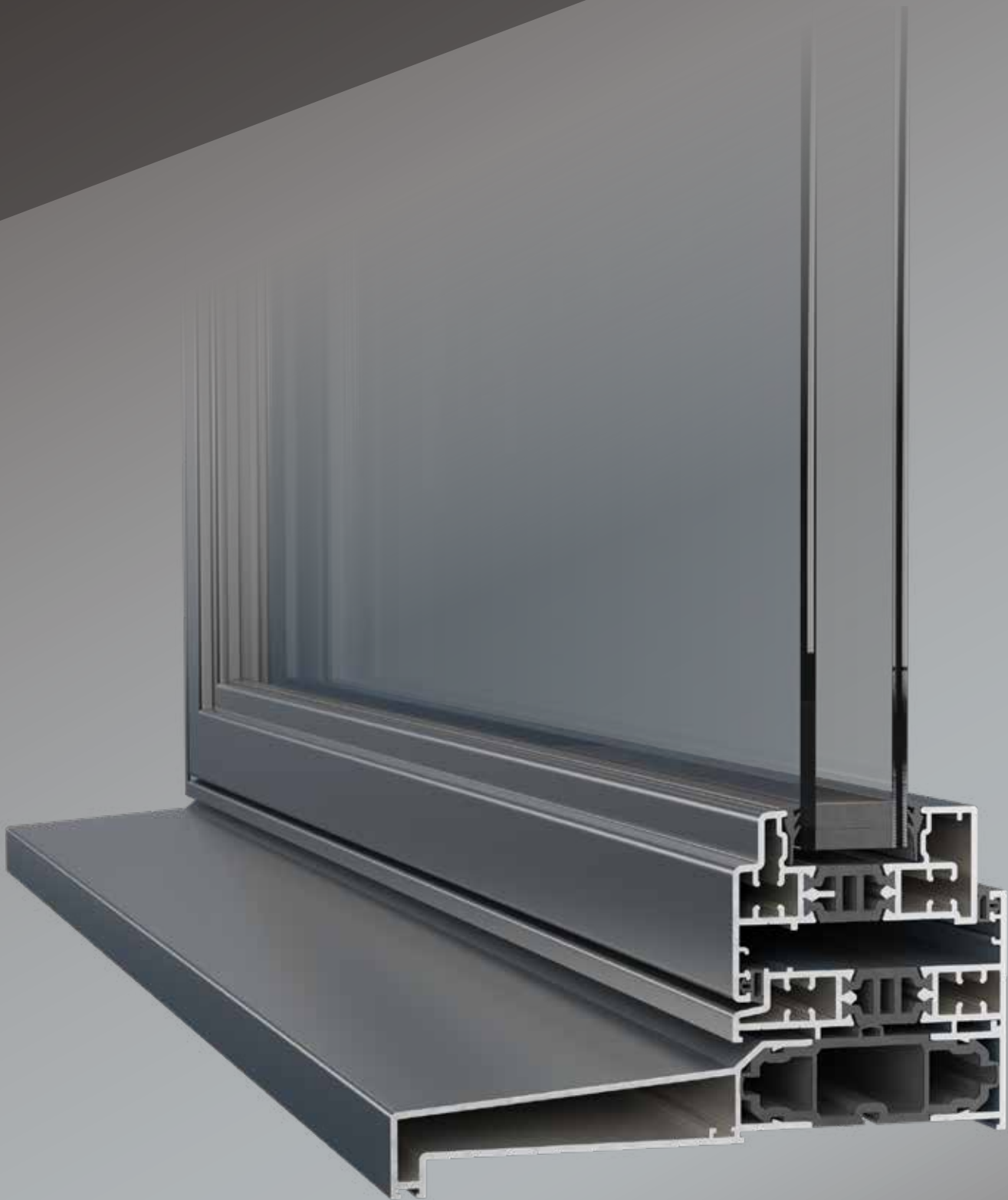
This closed-cell, insulating chamber acts as a thermal break and works in conjunction with our high performance double glazing to create class leading thermal performance, far superior to traditional polyamide thermal breaks. Sheerline's cills also feature this same technology coupled with innovative in-built weather sealing that keep draughts and rain safely outside.



SHEERLINE CLASSIC BEADLESS

the beadless, ultra-slim casement window

Aluminium





Beadless Security

With unrivalled security built into the heart of every window. The innovative construction of the Classic window system eliminates the need for separate glazing beads – often an area of weakness in traditional window design. Instead our patented corner jointing method securely locks the glass away within a completely sealed unit. This coupled with our high security multipoint locking and unique hinge protectors creates unparalleled levels of security. No window in its class is as secure. All Sheerline windows carry PAS24:2016 enhanced security accreditation, so if you are looking for stylish aluminium windows for extra peace of mind as standard.



Patented Construction

With great looks from every angle - due to our unique construction method. The ultra slim 59mm sightlines of the innovative Classic window system maximises the light flooding into your home, creating a refined architectural look. While our patented construction method – using threaded screws to bind corners tightly together in perfect unison – creates perfect run through mitres on internal joints, doing away with the unsightly junctions of square cut beads seen on ordinary aluminium windows.



SHEERLINE CLASSIC BEADED

the beaded, ultra-slim casement window

Aluminium





Classic Beaded is a natural development of the Classic Beadless window which uses a clip-in bead for rapid on-site glazing.

The ability to use a glazing bead means an outerframe can be glazed to create a super-slim non-opening window without having to use a dummy sash. Combining a fixed frame with an opening sash means that an unequal sightline window can be created - a style that is suited to industrial/ art deco style steel replacement installations.



SHEERLINE PRESTIGE

the beaded, slim casement window

Aluminium



WIDE RANGE OF RAL COLOURS AVAILABLE

WIDE RANGE OF SMOOTH & WOODGRAIN FOLLS

WER
A

U-Value
1.3

Sightline
88
mm



Prestige windows utilise the same styles as the Classic but use an internal glazing bead to retain the glass.

This enables Prestige to be engineered both deeper and wider, allowing for larger glass areas and a wide choice of glazing units - either double or triple glazed,

1.3 U-value double glazed, **0.9** U-value triple glazed

Thermal transmittance, also known as a U-value, measures the rate of transfer of heat. The better-insulated a window is, the lower the U-value will be. Available with up to 44mm triple glazing for the ultimate thermal performance. Triple glazing can also provide exceptional acoustic dampening to block out unwanted noise.



SPITFIRE S-200

the luxury high-performance door

Aluminium

Up to
**1150 x
2400mm**

Thickness
78mm

U-Value
0.9

WIDE RANGE OF RAL COLOURS AVAILABLE



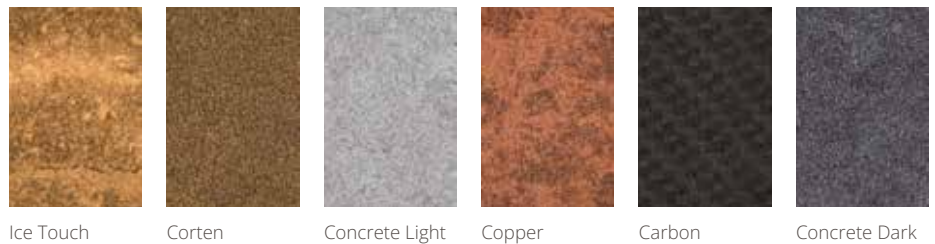


- » triple glazed
- » aluminium skin
- » insulated frame
- » structural frame
- » double rebate

Doors that are works of art, hand-made by a team of highly skilled designers and craftspeople. Our unique door collections exhibit an extraordinary investment in time, passion and craftsmanship. In-house designers combine exclusive materials with engineering precision. Superb attention to detail helps produce technically outstanding doors, guaranteed to excel in all weather conditions, day after day, for decades.

A wide range to choose from that includes sidelights, toplights, double doors and French doors, there's an S-200 door to suit every kind of property, whatever your personal style and taste in décor.

Special Finishes plus RAL colours



Ice Touch Corten Concrete Light Copper Carbon Concrete Dark

Wood effect finishes



T900 T830 T630 T820 T800 T910



SPITFIRE S-500

the ultimate high-performance door

Aluminium

Up to
**1250 x
2700mm**

Thickness
95mm

U-Value
0.6

WIDE RANGE OF RAL COLOURS AVAILABLE





Our S-500 iconic aluminium front doors are works of art. We liken the blueprint of these doors to a modern Rolls Royce because they are hand-made exclusively for you, crafted to your exact bespoke design. The total quality approach of our designers and factory team towards cutting-edge material selection and manufacturing perfection, combine to set these doors apart from any other residential entrance door in the world. Bespoke Spitfire S-500 doors are enjoyed by elite clients and they adorn properties owned by the most discerning homeowners in the UK.



Biometric thumb-print locking with controllable access via internet connected apps



SHEERLINE PRESTIGE BIFOLD DOORS

the most advanced bifold door system

Aluminium

Maximum width
Maximum height

6500mm
2600mm



Open up your home and fill it with natural light

Prestige bi-folds enable you to open up and transform your home. Providing that all important flexibility to enjoy your indoor and outdoor space as one. Combining the refined, architectural look of aluminium and the latest thermal and security technology, leaving you with beautifully balanced bi-folding doors.



Four threshold options - all fully weather sealed

Prestige bi-folds come with four threshold options all featuring fully weather-sealed rebates that keep the worst of the British weather safely outside. These rebates also ensure doors aren't over-centred during operation, helping locks to engage correctly.

Available in a choice of two styles

These slim, perfectly balanced bi-folds are available in stepped and contemporary 'flat-faced' styles, in configurations up to 7 panes wide.

Full-length interlocks

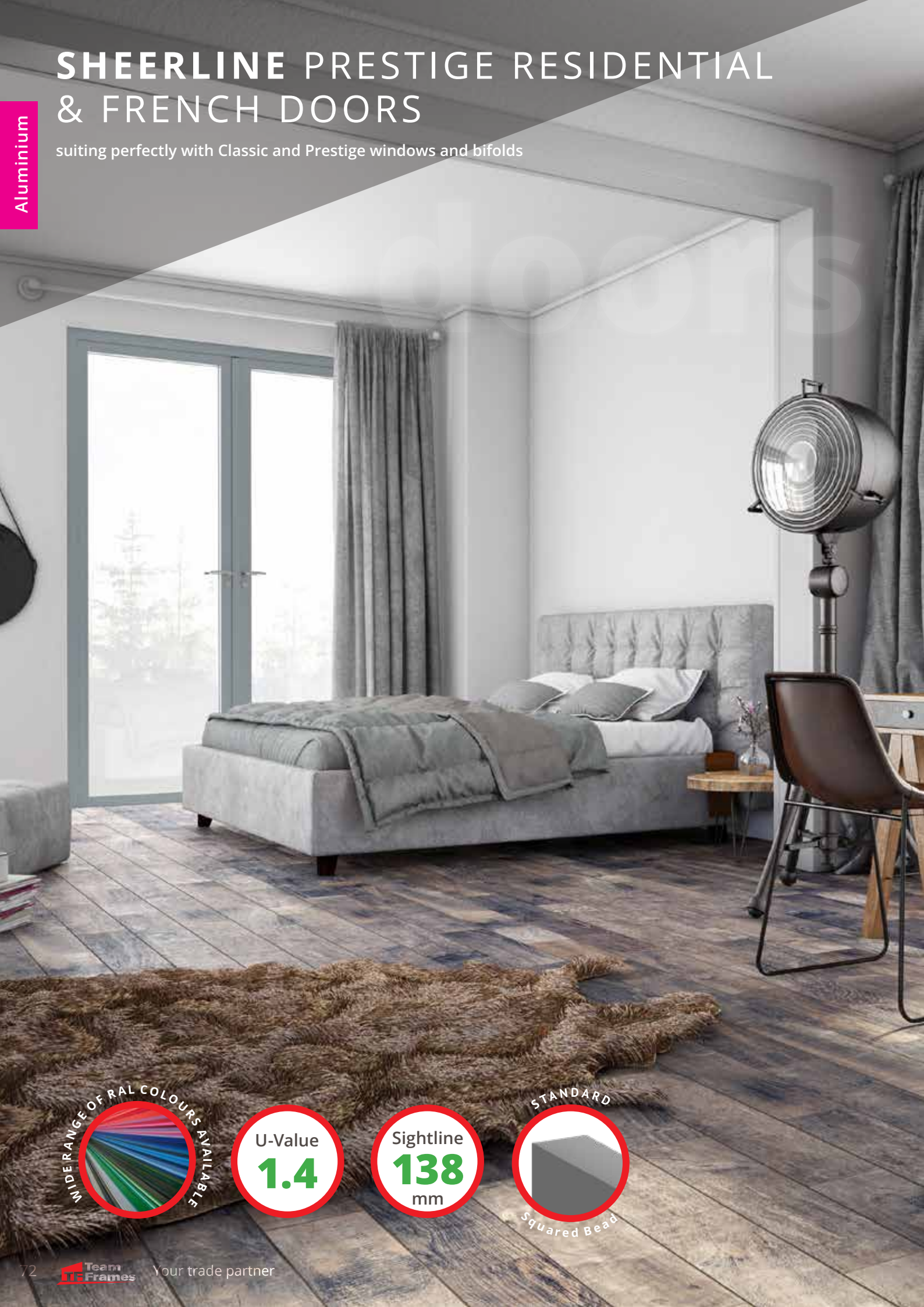
Prestige bi-folds use full length security interlocks on applicable door styles, to protect doors from would-be intruders. So if you are looking for extra peace of mind as standard – we have you covered.



SHEERLINE PRESTIGE RESIDENTIAL & FRENCH DOORS

suiting perfectly with Classic and Prestige windows and bifolds

Aluminium



WIDE RANGE OF RAL COLOURS AVAILABLE

U-Value
1.4

Sightline
138
mm

STANDARD



Squared Bead



Perfect for making an entrance

The Prestige system covers both single and French doors, so you can be sure of finding the perfect entrance for your home. All styles are offered with Part M compliant, thermally broken aluminium thresholds, ensuring there's no weak point in the thermal performance of your door and helping prevent condensation build-up. Continuing the high end aesthetics, no fixings are visible in the threshold, and designs follow the same clean, refined looks of our windows.



SHEERLINE LIFT & SLIDE PATIO DOOR

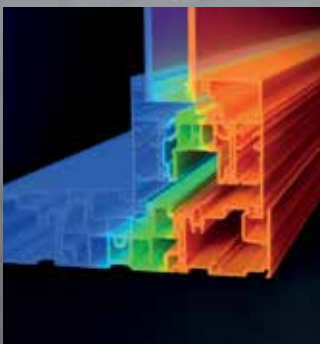
secure and stylish bifold door alternative

Aluminium

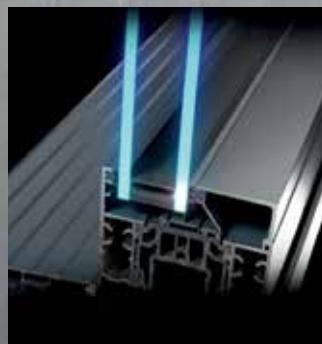


Slim, multi-track aluminium lift and slide patio door system with exceptional thermal and security performance

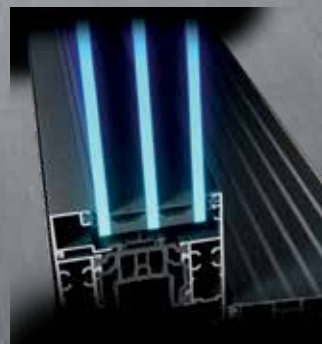
Maximum sash weight	400kg
Maximum width	6500mm
Maximum height	2500mm



Thermlock®
technology



Double-glazed 1.4
U-Value



Triple-glazed
1.0 U-Value



Prestige clip-in
glazing bead

Slim minimalist looks which aesthetically match the rest of the range, maximise glass area to make the most of the expansive views homeowners value.



Patented sealing arrangement for weathertightness



Slim interlock only 52mm



Standard interlock is 80mm



Dual or triple track option



Threshold options



Low threshold with ramp



Standard outer frame



Standard outer frame with clip-on cill nose

SHEERLINE S1

lantern roof system

Aluminium



Flood your home in light with our ultra secure, thermally efficient lanterns



The S1 lantern combines aluminium's clean lines with exceptional thermal performance and features our innovative Thermlock® multi-chamber technology to keep you and your property well insulated against the worst of the UK weather. This coupled to high performance 28mm glazing means our lantern roofs offer class leading thermal performance, far superior to traditional polyamide systems based around 24mm glazing. A unique co-extruded perimeter seal also ensures draughts and rain are kept safely outside. 28mm glazing also allows acoustic dampening glass to be fitted if required.

Choosing the right roof lantern for your home is an important decision. They should let in the maximum amount of light, yet keep heat in your home and would be intruders out. Letting you enjoy more natural light and amazing night time views of the stars, while bringing a sense of space and tranquillity to your home. This is why we have designed the S1 aluminium roof lantern from the ground up to meet your every need. Building on years of experience, we've incorporated many new innovative ideas to create a warmer, slimmer and much more secure roof lantern.



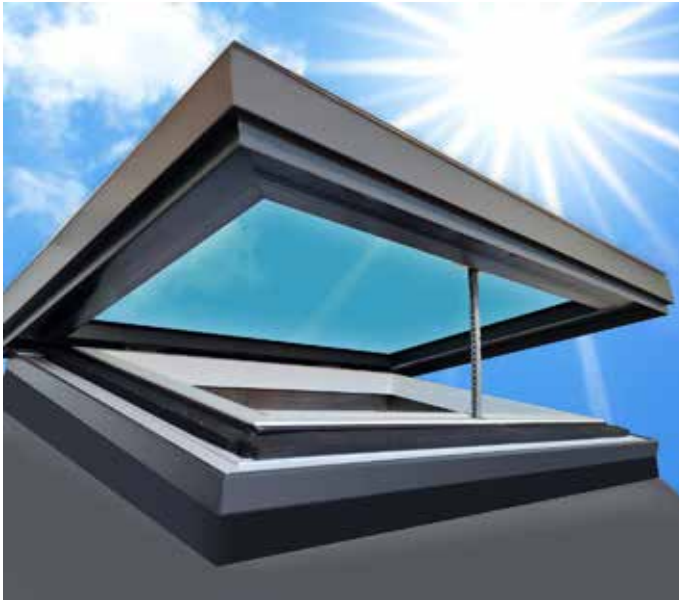
TITAN FLAT ROOFS

slimline and multi-pane EDGE roofs including 'walk-on' designs

Aluminium



With unrivalled, intelligent styling, thermal efficiency, security and simple installation, the Titan 'EDGE' flat rooflight ticks every box.



Design

With a unique and polished edge-to-edge glass exterior, it's not only a stunning evolution of its rivals, but brings many practical benefits. Its clever design allows water to simply glide off its surface and not be hindered by perimeter sealants or protruding frames - only 63mm above the roof upstand and blends seamlessly into any property.

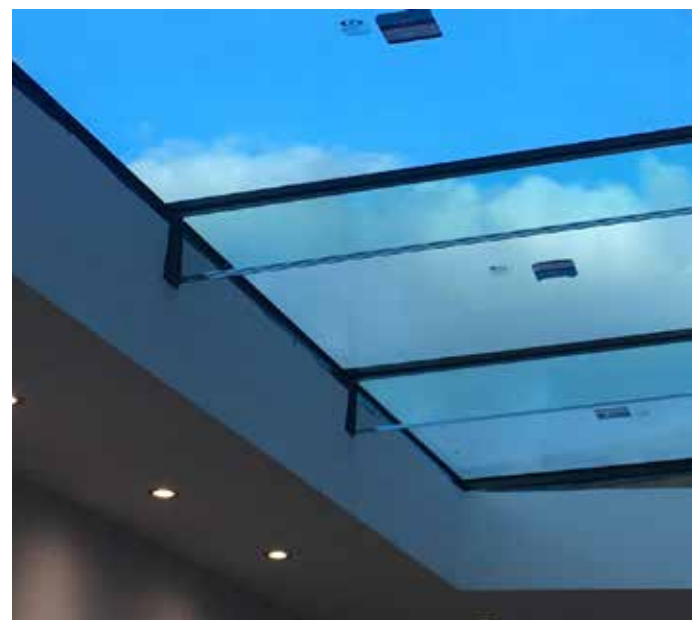
Thermally Efficient

Whilst allowing maximum light to flood in, the Titan 'EDGE' effortlessly allows to keep the unwanted heat out and the ambient room temperature constant, giving you the benefit of year-round comfort and performance. .

It benefits from both low maintenance solar reflective glass outside and low emission heat soaked toughened or laminated glass inside, structurally bonded into the unique super-slim edge thermally broken aluminium frame providing a typical

Security

A very welcomed standard feature of the Titan 'EDGE' bespoke range benefits from heat soaked toughened safety glass as standard, alternatively laminated security glass to the inner pane can be selected. Laminated glass provides homeowners with safety, security, noise reduction, and 98% reduction in UV rays which prevents sun bleaching. This addition gives you peace of mind as it's very difficult to penetrate from the outside as well as the inner panel is shatterproof laminated glass is so provides optimum safety.





TF Product Range 2023

All rights reserved © 2023 Team Frames Limited
In our ongoing quest to provide the highest quality products our designs and specifications are subject to change without any notice. Except as allowed by law, no part of this publication may be reproduced in any form without written consent.



Your trade partner